

Midea



Solunar



ECOMASTER



AI Humidity Control



CoolFlash



HeatFlash



Silent Mode



Prime Guard

Flash Cooling & Heating



Coolflash
Instant Cooling By 6.3°C
In 10 Minutes

A woman is shown meditating on a mat in a room with blue light effects, illustrating the cooling effect.



Heatflash
Instant Heating By 10.4°C
In 10 Minutes

A man is shown relaxing in a chair in a room with orange light effects, illustrating the heating effect.

3D Airflow

The directional air-outlet moves automatically both horizontally and vertically, directing nice and cool airflow to fill in every corner of the room.



Silent Mode

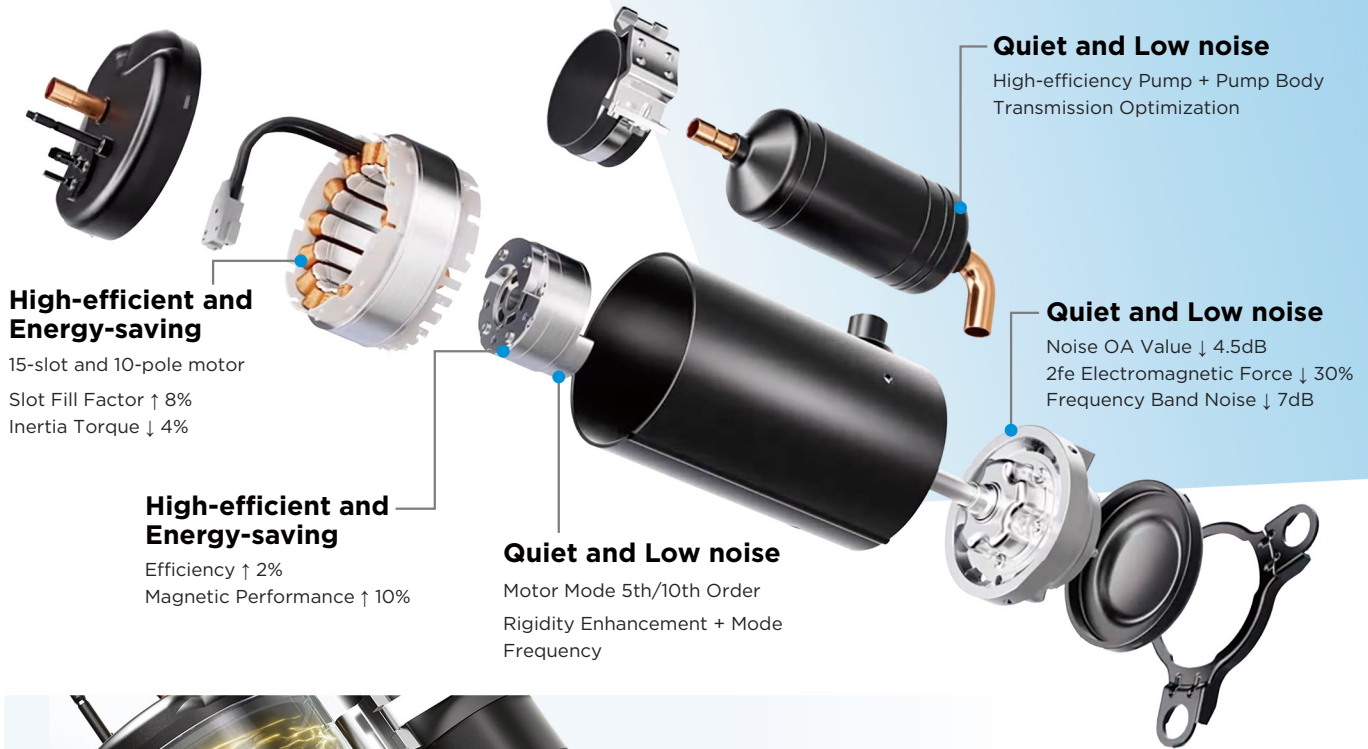
Inverter rotary compressor uses multi-field electromagnetic simulation to cut overall noise by 3dB vs previous generation.



*Measured on 9k BTU unit. Actual noise levels may vary by model and operating conditions.

New 15-Slot and 10-Pole DC inverter Rotary Compressor

(9K & 12K BTU Models)



Wideband Control

Open-source Self-developed Control Algorithm
Maximum Frequency \uparrow 20Hz;
Maximum Load \uparrow 10%;
Stability \uparrow 5%

Low Ambient Temperature Heating

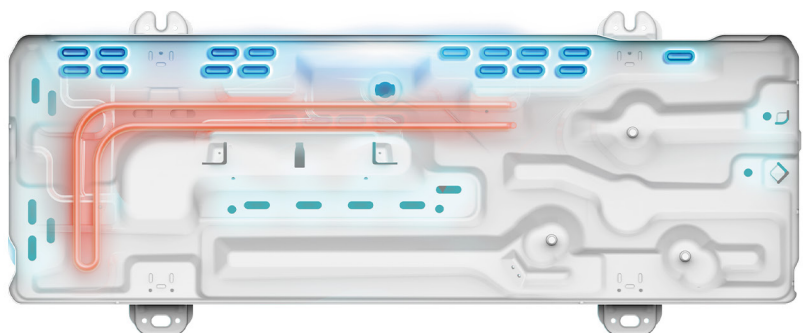


Crankcase Heating Belt (Optional)

Helps quickly and smoothly start up the heating mode in a low temperature environment, also prevent internal freezing.

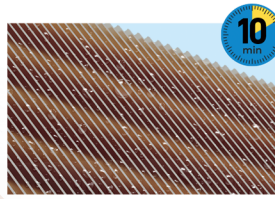
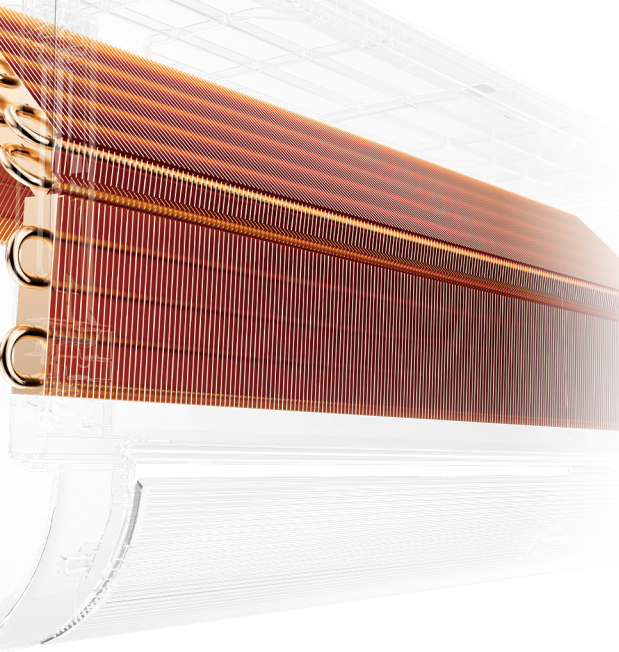
Specialized Chassis for Extreme Cold Regions (Optional)

- 1.The upgraded stainless steel chassis heater is embedded with a power 1.9 times higher than the previous model, which can quickly dissolve and remove ice and snow from the outdoor unit.
- 2.Multiple openings are added to the chassis structure to facilitate rapid drainage after low-temperature ice melting.

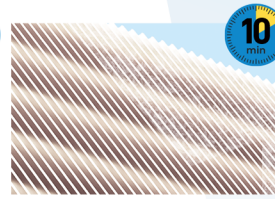


56°C-Clean function

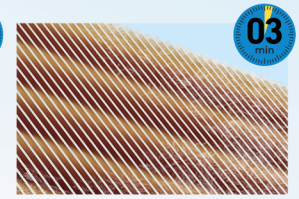
56°C-Clean function enables cleaning and drying the indoor coil to avoid mold.



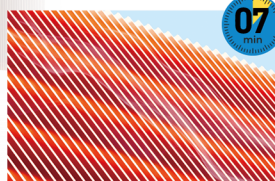
Cooling mode, Indoor fan turns to mid speed. **Water on evaporator**



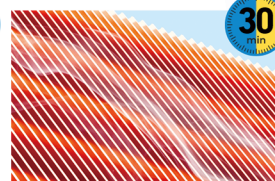
Cooling mode, Indoor fan stop (7m) and low speed (3m) **Frost on evaporator**



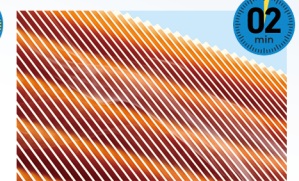
Turn off the unit and be **ready for heating mode**



Heating mode, Defrost and T2 gets 57°C



Heating mode, T2 > 57°C steady for at least 30 mins



Fan mode, Indoor fan turns to **mid speed**

Prime Guard

Extreme durability anti-aging & anti-corrosion

20 to 50-year corrosion-resistance fin

0.02% The corrosion area

5X Corrosion resistance than golden coating

1500-hour salt spray test validation

High thermal conductivity 31% Faster than golden coating

Strong hydrophilicity 92.5% Strongest than aluminum foil

Anti-corrosion

2X Thicker Protection for 10-15 Years Extra Lifetime

Midea Customized Coating is 2 times thicker than the ordinary coating in the past, for corrosion-resistance, long-life span and

Control of corrosion performance after 100 hours of continuous neutral salt spray process

Electrical Design

Strict MIDEA quality control system, to make sure

- More Stable
- More Durable
- More Safe
- Water Heat Transfer
- Energy Protection
- Compact Design

Quality Control

HYPER GRAPFINS™

Verified By Three Test Standards

20 to 50-year corrosion-resistance fin

Depended on the using industrial environment with salt contamination

After 240 hours UV test and 72 hours neutral salt spray (fog) test

0.02% corrosion area

12.5X corrosion resistance than blue coated fins

Stand Up to Neutral Salt Spray Test for

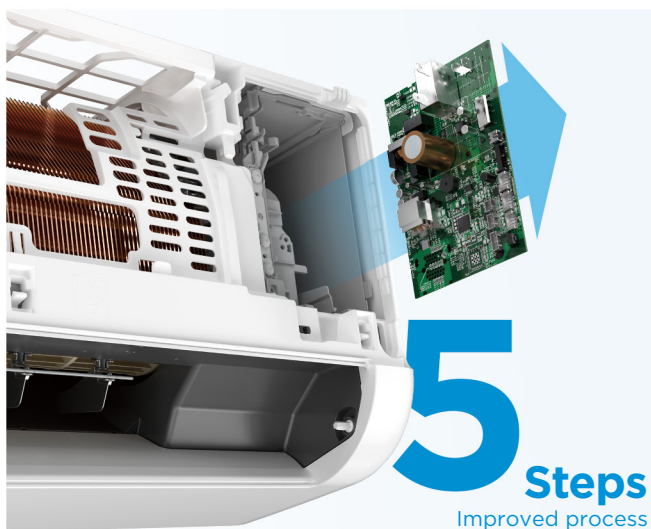
0.02%

* The judgment standard of corrosion resistance is based on comparing the maximum corrosion area ratio of the rating number in JIS Z 2371-2015. Compared samples are Midea fins: Midea blue coated fins in HD2202-2/HW3308, Midea HYPER GRAPFINS in HMD011/HW3308.

1 **2**

Verified by **intertek**
Total Quality. Assured.

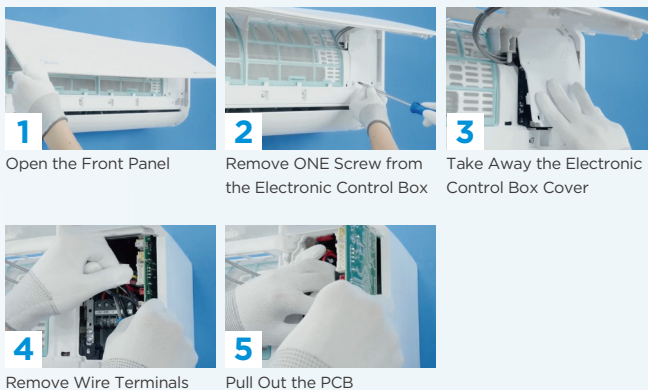
Innovation Design- Friendly To Installer



5 Steps
Improved process

Pull-out PCB Design

Achieve PCB replacement without removing the panel frame.



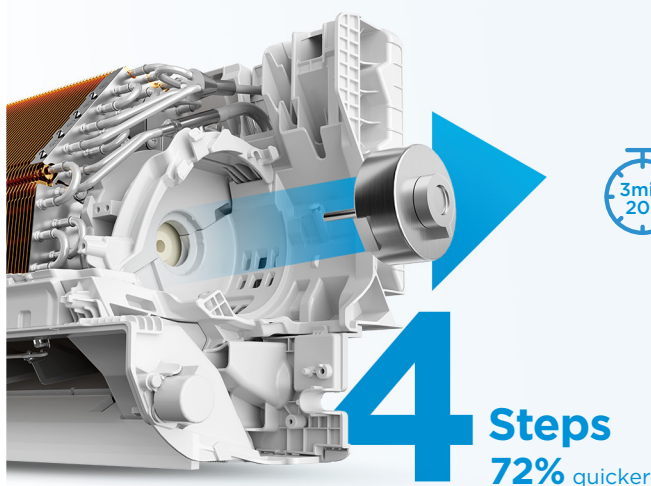
1 Open the Front Panel

2 Remove ONE Screw from the Electronic Control Box

3 Take Away the Electronic Control Box Cover

4 Remove Wire Terminals

5 Pull Out the PCB

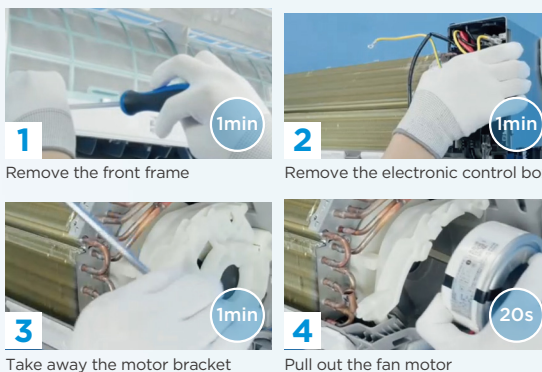


4 Steps
72% quicker



Fan Motor Repair Upgrade

Achieve motor replacement without removing the evaporator.



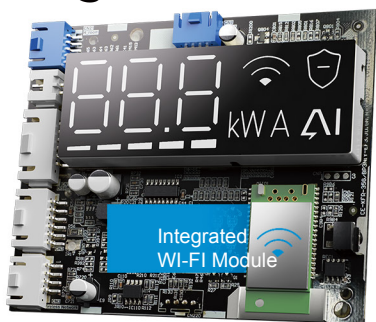
1 Remove the front frame

2 Remove the electronic control box

3 Take away the motor bracket

4 Pull out the fan motor

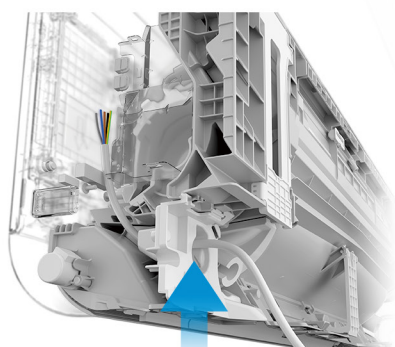
Integrated WI-FI Module



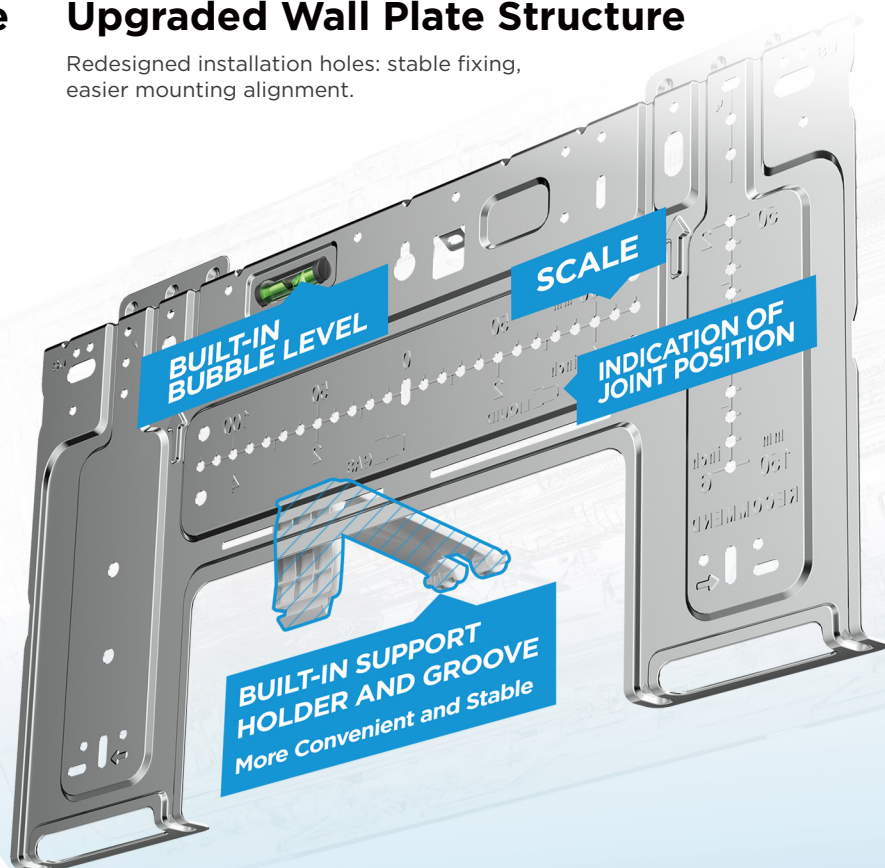
Upgraded Wall Plate Structure

Redesigned installation holes: stable fixing, easier mounting alignment.

Wire Tunnel



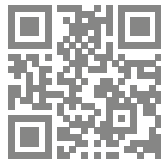
Wire Tunnel
Toolless Wiring



Model		EF-07RD1	EF-09RD1H	EF-12RD1H	EF-18RD1	EF-24RD1	
Indoor		EF-07RD1	EF-09RD1H	EF-12RD1H	EF-18RD1	EF-24RD1	
Outdoor		MX0-07RD1	MX1-09RD1H	MX1-12RD1H	MX3-18RD1-EF	MX4-24RD1-EF	
Power supply		Ph-V-Hz	220-240V, 1Ph , 50Hz	220-240V, 1Ph , 50Hz	220-240V, 1Ph , 50Hz	220-240V, 1Ph , 50Hz	220-240V, 1Ph , 50Hz
Rated Cooling	Capacity	kW	2.10 (0.88 to 2.46)	2.6 (1.08 to 3.20)	3.5 (1.4 to 4.0)	5.2 (1.8 to 5.9)	7.0 (2.0 to 7.8)
	Power input	kW	0.62 (0.10 to 0.82)	0.75 (0.07 to 1.26)	1.2 (0.12 to 1.35)	1.68 (0.14 to 2.10)	2.60 (0.42 to 3.90)
Cooling Current		A	3.00 (0.40 to 3.70)	5.20 (0.65 to 5.60)	5.10 (0.50 to 6.10)	7.1 (0.6 to 9.3)	11.5 (1.8 to 19.0)
Rated Heating	Capacity	kW	2.40 (0.73 to 2.70)	2.93 (0.76 to 3.60)	3.8 (1.07 to 4.30)	5.40 (1.30 to 6.10)	7.33 (1.60 to 7.80)
	Power input	kW	0.65 (0.12 to 0.78)	0.73 (0.12 to 1.16)	1.04 (0.11 to 1.25)	1.38 (0.22 to 1.70)	2.15 (0.30 to 2.50)
Heating Current		A	3.20 (0.50 to 3.50)	3.30 (0.95 to 5.20)	4.60 (0.50 to 5.50)	6.1 (0.9 to 7.6)	11.0 (1.3 to 11.1)
Seasonal Cooling	Pdesignc	kW	2.1	2.6	3.5	5.2	7.0
	SEER	W/W	7.1	7.5	7.5	7.4	6.5
	Energy Efficiency Class		A++	A++	A++	A++	A++
Heating (Average)	Pdesignh	kW	1.8	2.3	2.8	4.1	4.8
	SCOP	W/W	4.1	4.2	4.2	4.1	4.1
	Energy Efficiency Class		A+	A+	A+	A+	A+
	Tbiv	°C	-7	-7	-7	-7	-7
Heating (Warmer)	Pdesignh	kW	2.1	2.5	3	4.6	5.6
	SCOP	W/W	5.2	5.2	5.3	5.1	5.1
	Energy Efficiency Class		A+++	A+++	A+++	A+++	A+++
	Tbiv	°C	2	2	2	2	2
Tol		°C	-20	-20	-20	-20	-20
Moisture Removal		L/h	0.6	1.1	1.2	2.0	2.9
Max. input consumption		W	2,030	2,200	2,200	2800	3900
Max. current		A	9.0	10.0	10.0	13	19
Indoor air flow (Hi/Mi/Lo/Si)		m³/h	490/360/300/140	510/360/285/150	600/450/370/220	800/600/470/340	1050/750/600/400
Indoor noise level (Hi/Mi/Lo/Si)		dB (A)	37.5/32/23/18	38.5/34.5/24.5/20.5	38/32/25/20	43.0/35.5/33.5/20.0	45.0/39.5/36.0/20.0
Indoor sound power level		dB (A)	56	57	58	58	59
Indoor unit	Dimension (W x D x H)	mm	723 x 199 x 286	723 x 199 x 286	813 x 201 x 289	975 x 218 x 308	1055 x 231 x 330
	Packing (W x D x H)	mm	780 x 270 x 365	780 x 270 x 365	870 x 270 x 365	1035 x 295 x 385	1130 x 405 x 310
	Net/Gross weight	Kg	6.9/9.1	7.5/9.6	8/10.3	10.3/13.3	12.4/15.9
Outdoor air flow		m³/h	1300	1750	1750	2100	3500
Outdoor sound pressure level		dB (A)	51.5	54.0	56.0	57.5	60.0
Outdoor sound power level		dB (A)	61	62	65	65	68
Outdoor unit	Dimension (W x D x H)	mm	668 x 252 x 469	720 x 270 x 495	720 x 270 x 495	805 x 330 x 554	890 x 342 x 673
	Packing (W x D x H)	mm	765 x 270 x 525	835 x 300 x 540	835 x 300 x 540	915 x 370 x 615	995 x 398 x 740
	Net/Gross weight	Kg	17.8/19.5	20.4/22.3	21.1/23	29.8/32.3	38.3/41.5
Refrigerant	Type		R32	R32	R32	R32	R32
	GWP		675	675	675	675	675
	Charged quantity	Kg	0.400	0.460	0.58	0.80	0.95
Design pressure		MPa	4.3 / 1.7	4.3 / 1.7	4.30 / 1.70	4.3 / 1.7	4.3 / 1.7
Refrigerant piping	Liquid side/ Gas side	mm (inches)	6.35 (1/4") / 9.52 (3/8")	6.35 (1/4") / 9.52 (3/8")	6.35 (1/4") / 9.52 (3/8")	6.35 (1/4") / 12.7 (1/2")	6.35 (1/4") / 12.7 (1/2")
	Max. refrigerant pipe length	m	25	25	25	30	50
	Max. difference in level	m	10	10	10	20	25
Room temperature	Indoor (cooling/ heating)	°C	16 to 32 / 0 to 30	16 to 32 / 0 to 30	16 to 32 / 0 to 30	16 to 32 / 0 to 30	16 to 32 / 0 to 30
	Outdoor (cooling/ heating)	°C	-15 to 50 / -20 to 24	-15 to 50 / -20 to 24	-15 to 50 / -20 to 24	-15 to 50 / -20 to 24	-15 to 50 / -20 to 24
Application area (Cooling Standard)		m²	10 to 14	12 to 18	16 to 23	24 to 35	32 to 47
Qty/per 20' / 40' / 40'HQ			156/327/383	140/287/320	132/280/305	86/182/208	65/135/156



make yourself at home



<https://www.midea-group.com>